

NEW

# Announcing Stata Release 10

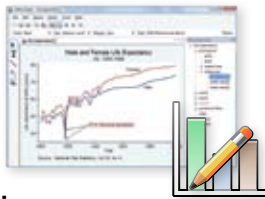


Stata 10 ships June 25. Order now at [www.stata.com](http://www.stata.com).

## Highlights of What's New in Stata 10

### Graph editor

- Add
- Remove
- Move
- Modify
- Anything



### Exact statistics

- Logistic binary-response regression
- Poisson count-data regression
- Exact tests and joint tests
- Predictions with exact CIs

### Mixed models

- Logistic binary-response regression
- Poisson count-data regression
- Random coefficients and intercepts
- Hierarchical and multilevel models
- Predicted effects

### Survey and correlated data

- Cox proportional hazards model
- Parametric survival models
- 27 more estimators now supported
- 48 total estimators

### Power analysis

- Solve for sample size, power, or effect size
- Log-rank test of survival curves
- Cox proportional hazards model
- Exponential regression

### Multivariate methods

- Discriminant analysis: LDA, QDA, and more
- Multiple and joint correspondence analysis
- Modern nonmetric multidimensional scaling

### Dynamic panel data

- Arellano–Bover/Blundell–Bond system estimator
- Smaller bias with persistent AR processes
- Serially correlated disturbances
- Test overidentifying restrictions

### Choice models

- Random-utility nested logit
- McFadden's choice model
- Rank-ordered probit
- Unbalanced groups

### Endogenous variables

- LIML estimation
- GMM estimation
- Tests of overidentifying restrictions

### Time/date variables

- Millisecond resolution
- Optional leap second adjustment
- User-defined display formats
- Easy conversion

### Saved results

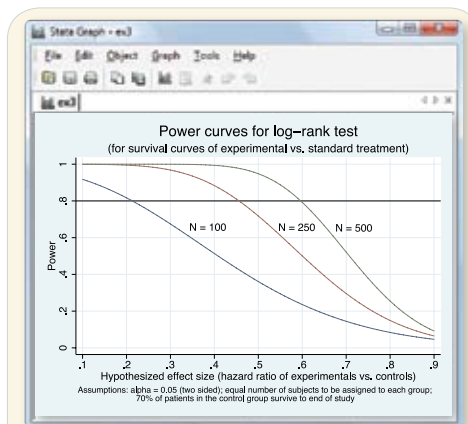
- Save estimation results to disk
- Compare models
- Restore and perform predictions
- Restore and perform tests

### Stata/MP

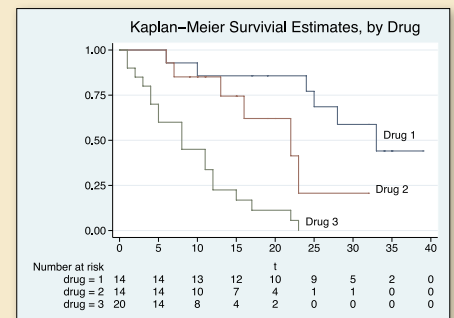
- Fastest version of Stata
- Dual core through 32 processors
- More commands parallelized
- All survey estimators now parallelized
- Upgrade from IC or SE

### More

- Local polynomial regression
- Nonlinear seemingly unrelated regression
- At-risk tables underneath survival graphs
- Three methods for handling singletons in survey data
- More estimation commands supporting bootstrap and jackknife standard errors
- Clustering with both binary and continuous variables by using the Gower measure
- Easy comparison tests for nested models
- Restricted cubic splines
- Windows Automation (OLE)
- Tabbed graph windows in Stata for Windows
- Optimization in Mata
- 23 pages more...



Stata's new **stpower** command does sample size, power, and effect size calculations for survival studies. Above, a study is being designed to compare survival of patients given two different treatments and, given the time available for the study, it is assumed that 70% of the control group will survive to the end. The graph shows the power as a function of effect size for sample sizes of 100, 250, and 500. Results can also be shown in tabular form.



**sts graph's** new **risktable** option adds number at risk below and aligned with the graph.

Find out more inside  
and even more at  
[www.stata.com](http://www.stata.com).

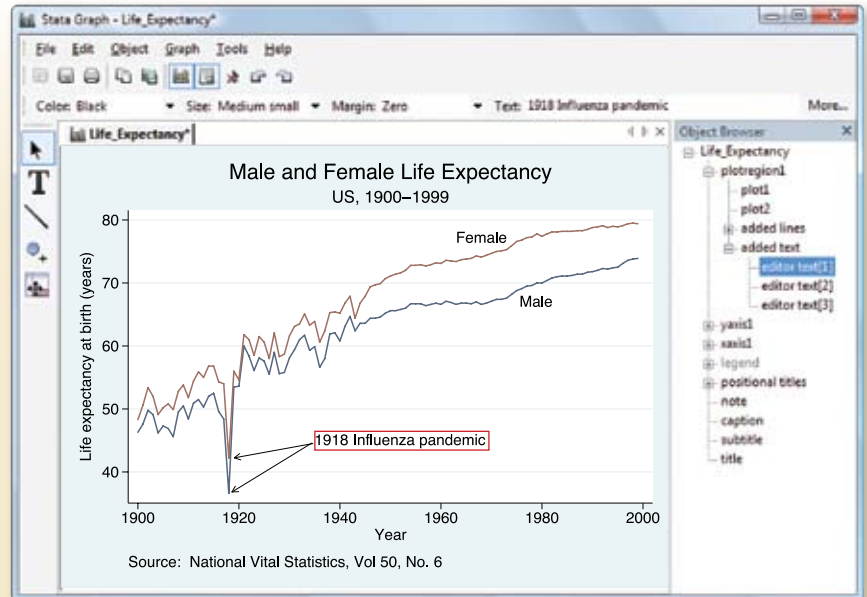
## Graph editor



With Stata's new Graph Editor, you can change how your graph looks. You can add. You can remove. You can move. You can modify. Anything. Titles, legends, axes, lines, arrows, markers, annotations.

- Add lines and arrows with the Add-line Tool.
- Add text with the Add-text Tool.
- Move titles, legends, lines, etc., by dragging.
- Change a scatterplot to a line plot (or any kind of plot to any other kind of plot) from the contextual toolbar.
- Change the aspect ratio from the contextual toolbar.
- Change the properties—color, size, alignment—of any object—titles, legends, lines, axes, etc.—by double-clicking on it.
- Customize the look of a point and add, remove, or customize its label by right-clicking on the point.
- Add new axis ticks and add, remove, or customize labels by right-clicking on the axis.
- Change spacing between bars, or make them overlap, or stack them, or convert them to percentages, by right-clicking on the graph.
- Hide an object, or lock its position, by right-clicking.

So it's easy: move your mouse to where you want to make a change; click, double-click, or right-click; and within a few seconds you'll have it figured out.

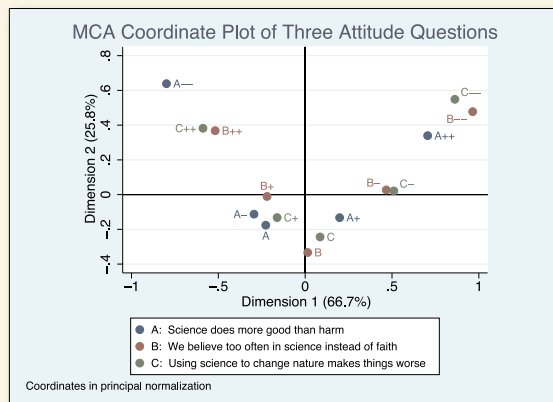


## Multiple correspondence analysis (MCA)

MCA explores relationships among categorical variables by projecting onto reduced spaces that may correspond to unobserved factors. MCA is similar to principal components analysis (PCA) but is for categorical data.

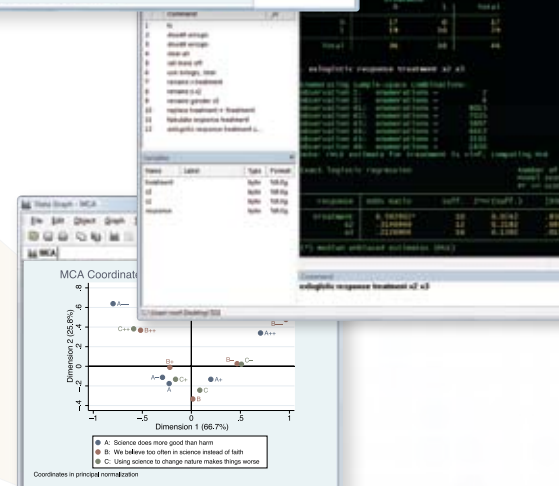
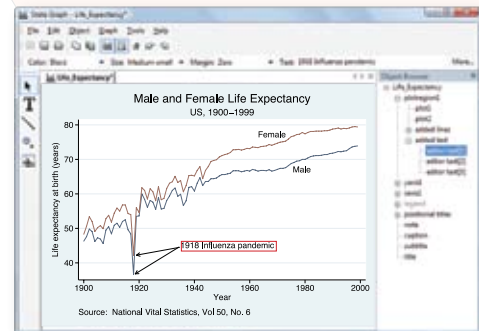
Consider a survey measuring attitudes toward three statements: (A) science does more good than harm, (B) we believe too often in science instead of faith, and (C) using science to change nature makes things worse. Responses range from strongly disagree (--) to strongly agree (++)

To run MCA on these data, type `mca A B C`. To visualize the results in two dimensions that explain the most variation, type `mcaplot`.



Dimension 1 explains 67% of the variation. Dimension 2 explains an additional 26%, and the two together explain 93%. One interpretation is that the first dimension represents attitude toward science and the second, intensity of feeling.

Stata's new `mca` command handles any number of categorical variables and allows crossed or stacked variables as well. Multiple MCA methods are provided, including methods based on the Burt matrix, the indicator matrix, and the reduced Burt matrix (joint correspondence analysis, or JCA).



RELEASE

## Mixed models for binary and count responses

Stata's new mixed-models estimation routines `xtmelogit` and `xtmepoisson` make it easy to fit two-way, multiway, multilevel, and hierarchical random-effects models on binary and count data.

To fit a model of graduation with fixed coefficient on `x1` and random coefficient on `x2` at the school level, and with random intercepts at both the school and class-within-school level, you type

```
. xtmelogit graduate x1 x2 || school: x2 || class:
```

| Group Variable | No. of Groups | Observations per Group Minimum | Average | Maximum | Integration Points |
|----------------|---------------|--------------------------------|---------|---------|--------------------|
| school         | 26            | 10                             | 42.6    | 89      | 7                  |
| class          | 68            | 6                              | 16.3    | 25      | 7                  |

| graduate | Coef.     | Std. Err. | z     | P> z  | [95% Conf. Interval] |
|----------|-----------|-----------|-------|-------|----------------------|
| x1       | .697675   | .1314404  | 5.31  | 0.000 | .4400577 .952944     |
| x2       | 1.309437  | .2232375  | 5.87  | 0.000 | .8719 1.746975       |
| _cons    | -.9546464 | .1291644  | -7.39 | 0.000 | -1.207804 -.7014889  |

| Random-effects Parameters  | Estimate | Std. Err. | [95% Conf. Interval] |
|----------------------------|----------|-----------|----------------------|
| <b>school: Independent</b> |          |           |                      |
| sd(x2)                     | .8279325 | .2018337  | .5134389 1.335061    |
| sd(_cons)                  | .4553757 | .1247884  | .266141 .7791625     |
| <b>class: Identity</b>     |          |           |                      |
| sd(_cons)                  | .2802479 | .1840505  | .0773611 1.015224    |

LR test vs. logistic regression:    chi2(3) =    31.78    Prob > chi2 = 0.0000

The results show that the average coefficient across schools on `x2` is 1.31 with standard deviation .83. There is also a significant overall effect due to school and a somewhat significant effect due to class. The LR test shows that the three random effects, taken together, provide a substantially better fit than does standard (marginal) logistic regression.

Estimation is by ML, and standard errors and confidence intervals (in fact, the full covariance matrix) are estimated for all variance components.

`xtmelogit` and `xtmepoisson` provide four random-effects variance structures—identity, independent, exchangeable, and unstructured—and you can combine them to form even more complex block-diagonal structures.

## Exact logistic regression

Stata's new exact logistic regression command provides better coverage in small samples than does standard logistic regression.

It also provides parameter estimates and confidence intervals where standard asymptotic methods cannot.

Such cases include small-data problems with binary regressors for which the outcome is 1 whenever the regressor is 1.

In the example below, every treated patient exhibits a positive response. Standard logistic regression cannot estimate the treatment effect. Stata 10's new `exlogistic` command can:

```
. exlogistic response treatment x2 x3
Enumerating sample-space combinations:
observation 1: enumerations =      2
<output omitted>
observation 46: enumerations =    1650
note: CMLE estimate for treatment is +inf; computing MUE

Exact logistic regression                                Number of obs =      46
Model score = 12.88247
Pr >= score = 0.0027
```

| response  | Odds Ratio | Suff. | 2*Pr(Suff.) | [95% Conf. Interval] |
|-----------|------------|-------|-------------|----------------------|
| treatment | 6.592992*  | 10    | 0.0742      | .8508871 +Inf        |
| x2        | .3146999   | 12    | 0.2182      | .0499248 1.667561    |
| x3        | .2126903   | 16    | 0.1392      | .0178841 1.437233    |

(\* ) median unbiased estimates (MUE)

Parameter estimates, standard errors, and CIs are calculated on the basis of permutation without recourse to asymptotic assumptions and results.

Not only is the treatment effect estimated, but tests of significance and reported confidence intervals are based on exact methods.

Stata 10 also includes exact Poisson regression for count data.

## Order now.

Stata 10 ships June 25. Orders will be shipped in the order received. Order at [www.stata.com](http://www.stata.com) or use the enclosed form. International customers should contact their local distributor.

## Questions? Contact us:

Phone: 979-696-4600 Email: [service@stata.com](mailto:service@stata.com)  
Toll free: 800-STATAPC (USA) Web: [www.stata.com](http://www.stata.com)  
Fax: 979-696-4601



## 6th North American Stata Users Group meeting

**Dates:** August 13–14, 2007

**Venue:** Longwood Galleria Conference Center  
342 Longwood Ave.  
Boston, MA 02115-5745

| Day                          | Price | Student Price |
|------------------------------|-------|---------------|
| Day 1: Users Group meeting   | \$85  | \$35          |
| Day 2: Invited presentations | \$95  | \$35          |
| Both days                    | \$150 | \$50          |
| Day 1: Optional dinner       | \$35  | \$35          |

The 6th annual North American Users Group meeting will be the first following the release of Stata 10. Talks include using Stata for modeling and analysis, user-written Stata programs, using Stata to import and manage data, using Stata for graphics, teaching Stata, teaching statistics with Stata, surveys or critiques of Stata facilities in specific fields, and software comparisons. Overviews and tutorials will also describe some of the new features in Stata. The talks will appeal to both new Stata users and Stata experts.

The first day will feature 10- to 30-minute talks on a range of subjects, as well as the ever-popular "Wishes and grumbles" session. This year will include a new "Stump the champs" session where you can address thorny questions to a panel of experts, both longtime users and StataCorp staff.

The second day will feature four invited talks, including two on new features in Stata 10.

Register to attend at [www.stata.com/meeting/6nasug](http://www.stata.com/meeting/6nasug).

### Program committee

Kit Baum, Boston College and RePEc  
Marcello Pagano, Harvard School of Public Health  
Nicholas Horton, Department of Mathematics and Statistics, Smith College

### Day 1: Users Group meeting (preliminary program)

- Quantiles, L-moments, and modes: Bringing order to descriptive statistics. Nicholas Cox, Durham University
  - Extensions to var and svar estimation. Michael Hanson, Wesleyan University
  - Meta-analytical integration of diagnostic accuracy studies in Stata. Ben Dwamena, Division of Nuclear Medicine, University of Michigan Health System
  - Agony and ecstasy: Teaching a modern computationally intensive introductory statistics course using Stata. Nicholas Jon Horton, Smith College
  - Powerful new tools for time-series analysis. Christopher Baum, Boston College, DIW Berlin, and RePEc
  - Record linkage in Stata. Michael Blasnik, M. Blasnik & Associates
  - Ado-lists: A new concept for Stata. Ben Jann, ETH Zürich
  - Constructing Krinsky and Robb confidence intervals for mean and median WTP using Stata. P. Wilner Jeanty, The Ohio State University
  - Stump the champs. Panel of Stata experts
  - Report to users. Roberto G. Gutierrez, StataCorp
  - Wishes and grumbles. All attendees
- More to come. For updates, see [www.stata.com/meeting/6nasug/](http://www.stata.com/meeting/6nasug/).

### Day 2: Tutorials and invited talks

- Causal inference with observational data: Regression discontinuity and related methods in Stata. Austin Nichols, Urban Institute
- Recent developments in multilevel modeling, including binary and count response. Roberto G. Gutierrez, StataCorp
- From estimation output to document tables: A long way made short. Ben Jann, ETH Zürich
- Power analysis and sample-size determination in survival models with the new `stpower` command. Yulia Marchenko, StataCorp

## International Distributors

### Chips Electronics

Brunei, Indonesia, Malaysia, Singapore  
tel: +62-21-452 17 61  
email: [puyuh23@indo.net.id](mailto:puyuh23@indo.net.id)

### Columbia CP, Ltd.

China, Hong Kong, Indonesia, Malaysia, Philippines, Singapore, Thailand, Vietnam  
tel: +86-131-47501748 China  
+852-28580080 HK  
+62-21-633 3456 ext. 401 Indonesia  
+603-56389268 Malaysia  
+63-2-484-0021 Philippines  
+65-68425538 Singapore  
+66-8-17209515 Thailand  
+84-4-7870931 Vietnam  
email: [sales@columbiacp.com](mailto:sales@columbiacp.com)

### Dittrich & Partner Consulting

Czech Republic, Germany, Hungary  
tel: +49 2 12 / 26 066-0  
email: [sales@dpc.de](mailto:sales@dpc.de)

### DPC Geschäftsstelle Wien

Austria  
email: [info@dpc.co.at](mailto:info@dpc.co.at)

### DPC Nederland

The Netherlands  
tel: +31 (0)76 530 2330  
email: [sales@dpc-software.nl](mailto:sales@dpc-software.nl)

### East Asia Training & Consultancy

Indonesia, Malaysia, Singapore, Thailand, Vietnam  
tel: +65 62199062 Singapore,  
Malaysia, Vietnam, Indonesia  
6279000 Thailand  
email: [stata@eastasiatc.com.sg](mailto:stata@eastasiatc.com.sg)

### Ixon Technology Company, Ltd.

Taiwan  
tel: +886-(0)2-27045535  
email: [hank@ixon.com.tw](mailto:hank@ixon.com.tw)

### JasonTG

South Korea  
tel: +82 (0)2470-4143  
email: [info@jasonTG.com](mailto:info@jasonTG.com)

### Mercostat Consultores

Argentina, Paraguay, Uruguay  
tel: 598-2-613-7905  
email: [mercost@adinet.com.uy](mailto:mercost@adinet.com.uy)

### Metrika Consulting

the Baltic States, Denmark, Finland, Iceland, Norway, Sweden  
tel: +46 (0)8-792 47 47  
email: [metrika@metrika.se](mailto:metrika@metrika.se)

### MultION Consulting S.A. de C.V.

Belize, Costa Rica, El Salvador, Guatemala, Honduras, Mexico, Nicaragua, Panama  
tel: 52 (55) 5559 4050  
email: [direccion@multion.com.mx](mailto:direccion@multion.com.mx)

### Quantec Research (Pty), Ltd.

Africa  
tel: +27-12-3615154  
email: [software@quantec.co.za](mailto:software@quantec.co.za)

### Ritme Informatique

Belgium, France, Luxembourg  
tel: +33 (0)1 42 46 00 42  
email: [info@ritme.com](mailto:info@ritme.com)

### Scientific Formosa, Inc.

Taiwan  
tel: 886-2-25050525  
email: [amanda@sciformosa.com.tw](mailto:amanda@sciformosa.com.tw)

### Scientific Solutions, S.A.

Switzerland  
tel: 41 (0)21 711 15 20  
email: [info@scientific-solutions.ch](mailto:info@scientific-solutions.ch)

### SOFTWARE Shop, Inc.

Bolivia, Chile, Colombia, Ecuador, Peru, Venezuela  
tel: +1-425-651-4090 Bolivia, Ecuador  
+ 57-(1)-619-4000 Colombia  
+ 58-(212)-771-5899 Venezuela  
+ 51-(1)-705-9789 Peru  
+ 56-(2)-595-2954 Chile  
email: [Ventas@SOFTWARE-shop.com](mailto:Ventas@SOFTWARE-shop.com)

### Survey Design & Analysis Services

Australia, New Zealand  
tel: +61 (0)3 9878 7373  
email: [sales@survey-design.com.au](mailto:sales@survey-design.com.au)

### Timberlake Consultants

Eire, Ireland, UK  
tel: +44 (0)208 697 3377  
email: [info@timberlake.co.uk](mailto:info@timberlake.co.uk)

### Timberlake Consultants Polska

Poland  
tel: +48 (0)22-8252927  
email: [info@timberlake.pl](mailto:info@timberlake.pl)

### Timberlake Consulting S.L.

Spain  
tel: +34 955601430  
email: [timberlake@timberlakeconsulting.com](mailto:timberlake@timberlakeconsulting.com)

### Timberlake Consultores Brasil

Brazil  
tel: +55-11-3040-3042  
email: [info@timberlake.com.br](mailto:info@timberlake.com.br)

### Timberlake Consultores, Lda.

Portugal  
tel: +351 245 308 549  
email: [info@timberlake.pt](mailto:info@timberlake.pt)

### TStat S.r.l.

Italy  
tel: +39 0864 210101  
email: [tstat@tstat.it](mailto:tstat@tstat.it)

### Vishvas Marketing-Mix Services

India  
tel: 91-22-2589 26 39  
email: [vishvas@vsnl.com](mailto:vishvas@vsnl.com)

## International Resellers

### Axoft Company

Russia, Armenia, Azerbaijan, Belarus, Georgia, Kazakhstan, Kyrgyzstan, Moldova, Tajikistan, Turkmenistan, Ukraine, Uzbekistan  
tel: +7-495 232-5215  
email: [info@axoft.ru](mailto:info@axoft.ru)

### BockyTech, Inc.

Taiwan  
tel: +886-2-23618050  
email: [raymond@bockytch.com.tw](mailto:raymond@bockytch.com.tw)

### Informatique, Inc.

Japan  
tel: +81-3-3505-1250  
email: [sales@informatiq.co.jp](mailto:sales@informatiq.co.jp)

### Katalogo Software

Brazil  
tel: +55-11-3405 4528  
email: [cinthiap@katalogo.com.br](mailto:cinthiap@katalogo.com.br)

### MP & Associates

Greece, Cyprus  
tel: +30-210-7600955  
email: [info@mpassociates.gr](mailto:info@mpassociates.gr)

### NFUCA

Japan  
tel: 81-3-5307-1133  
email: [softinfo@univcoop.or.jp](mailto:softinfo@univcoop.or.jp)

### Tashtit Scientific Consultants, Ltd.

Israel  
tel: +972-3-523-0825  
email: [info@tashtitsoft.co.il](mailto:info@tashtitsoft.co.il)

### Token Communication, Ltd.

Romania  
tel: +40 264 450201  
email: [token@pcnet.ro](mailto:token@pcnet.ro)

### UYTES

Turkey  
tel: +90 312 446 1866  
email: [info@uytes.com.tr](mailto:info@uytes.com.tr)